

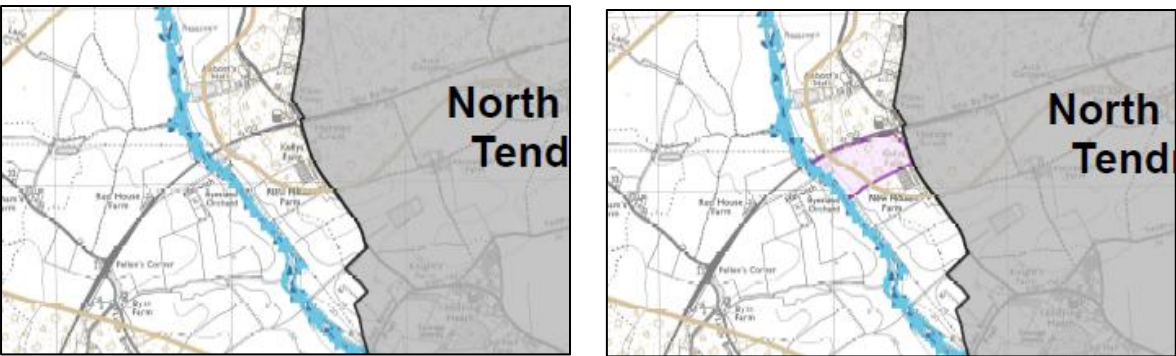
Administrative corrections to address minor typographical, grammatical and factual errors in the new Section 2 Local Plan - as proposed by the Acting Director of Planning

Following the decision of Full Council on 25th January 2022 to formally adopt the new Tendring District Council Local Plan – Section 2, a small number of corrections are proposed by the Acting Director of Planning to the text and maps before it is published. The Council has given delegated authority to the Acting Director for Planning to make such corrections, in consultation with the Leader of the Council and the Chairman of the Planning Policy and Local Plan Committee.

Textual Corrections

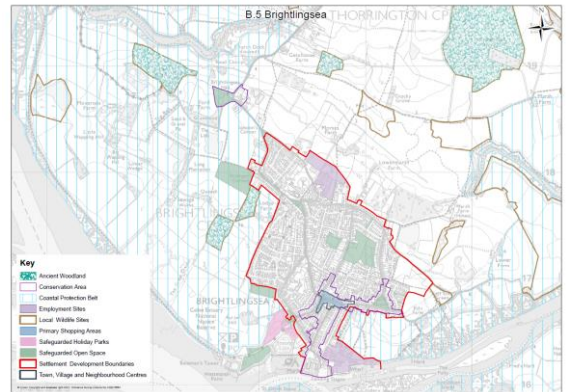
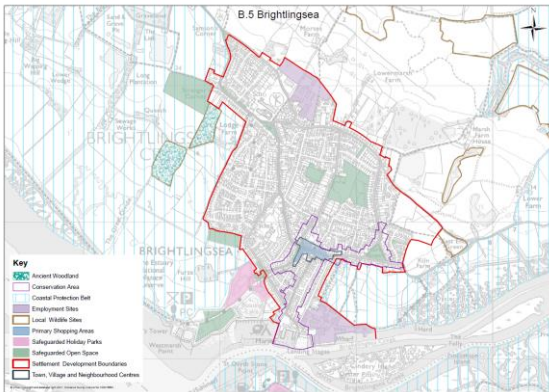
Paragraph/Policy	Page	Change	Comments
Table LP2	56	<ul style="list-style-type: none"> Garden Community Policy should be reference SP9, not SP7 	To reflect the re-numbering of Policies in Section 1 of the Local Plan when it was adopted in January 2021.
Throughout	-	<ul style="list-style-type: none"> Change all references to Dong Energy to “ORSTED”. 	To reflect the change in company name.
Appendix B Local Maps	188	<ul style="list-style-type: none"> Correct spelling of Alresford in list of maps. 	The title on the map itself is correct, but the spelling within the list is to be corrected.

Map Changes

Map	Change
West Tendring	<ul style="list-style-type: none"> Show the Horsley Cross employment allocation on the map to ensure it correctly reflects the allocation in Policy PP7.
	

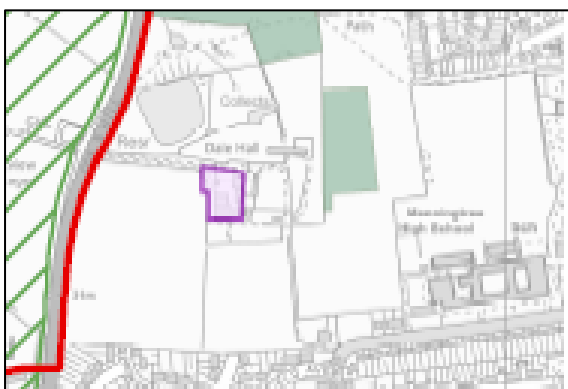
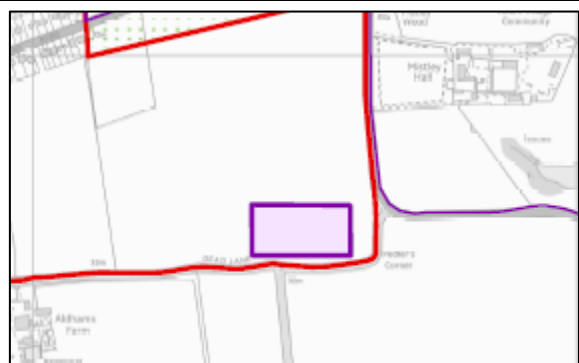
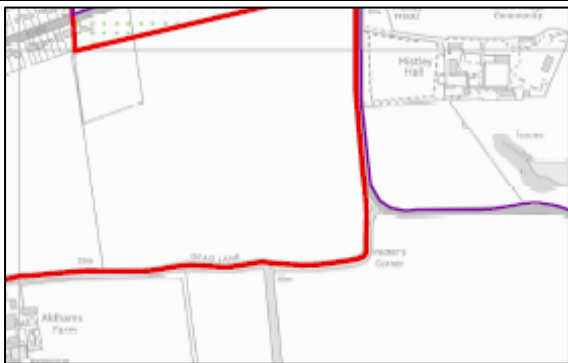
B.5 Brightlingsea

- Decrease scale of map to encompass wider area around Brightlingsea, following comments made at the meeting of the Planning Policy and Local Plan Committee on 11th January 2022.



B.21 Manningtree, Lawford and Mistley

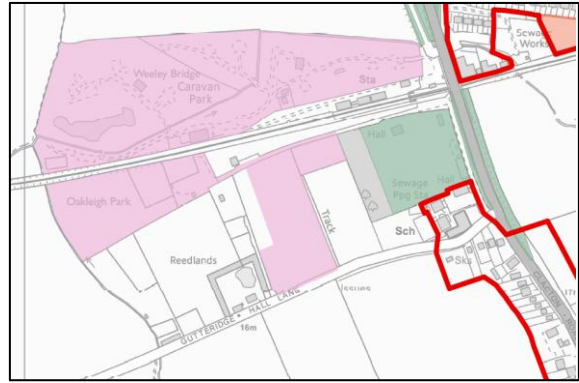
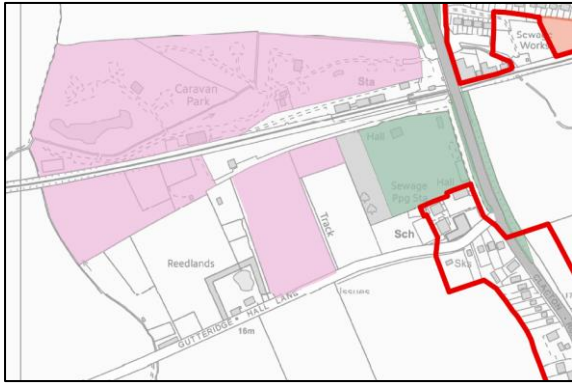
- Ensure the Dead Lane employment allocation is shown on the map to reflect the content of Policy PP7.
- Correct the depiction of the Dale Hall site to show an existing employment site (Policy PP6) instead of an allocated employment site (Policy PP7)



B.28 Weeley

- Correct the map to ensure the safeguarded holiday park designation on the two areas of the Oakleigh Park site are shown as conjoined by an access road.
- Manually add name of the park to the OS base map for clarity and to distinguish it from other sites in the area.

These corrections are to me made following comments raised at the Planning Policy and Local Plan Committee of 11th January 2022.



Gary Guiver

Acting Director of Planning

25th January 2022